

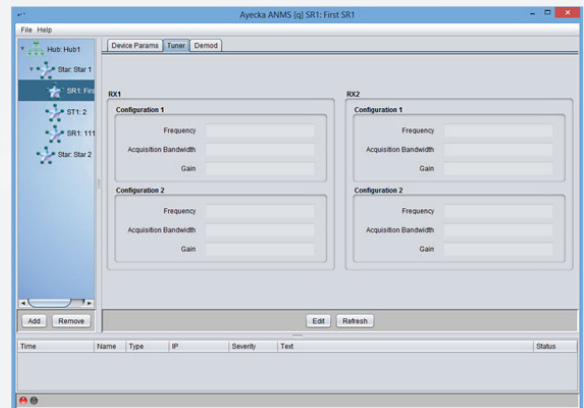
## AEM - Ayecka Element Manager. Advanced management tool for Ayecka products

The AEM offers a stable, flexible and intuitive software tool to manage Ayecka IP over DVB-S2 products. As a JAVA application that relies on SNMP interfaces of the products, the AEM is cross platform and fits into any network.

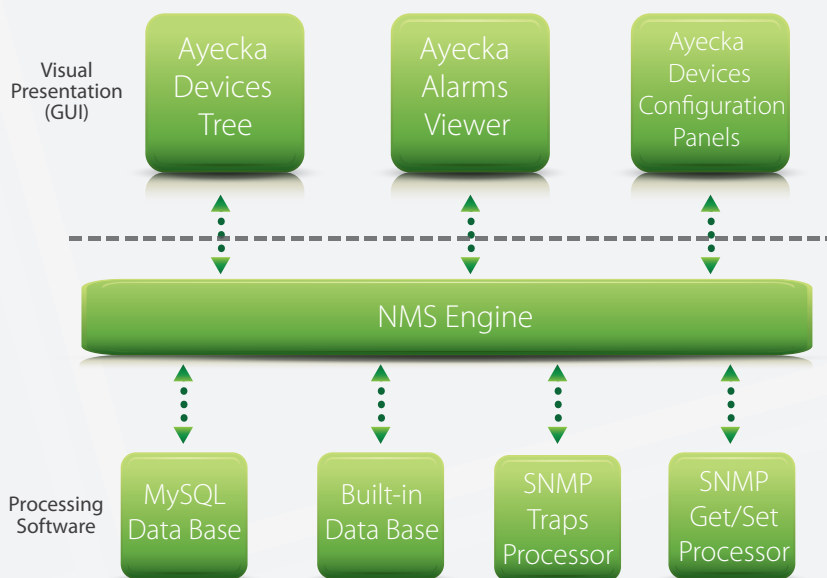
AEM offers easy to use monitoring, version maintenance and bulk configuration. The AEM is an optimal tool to manage from 10 to 1000 devices.

### AEM Product Highlights

- Hierarchical organization – HUB, STAR, Remote, for simple operation and visibility of the network
- Support for standard SQL database for simple backup and data management
- Bulk operation to simplify network management
- Simple creation of groups of product for bulk operations
- Support one-way control without return channel.
- Graphical presentation with the ability to drill down to the specific parameter.
- Keep alive and monitoring
- Fully customizable – Language, Logo, screens etc.



### AEM Block Diagram



## Enhanced Features

**Light weight** – AEM is a light-weight and stable solution to assure optimized use IP over DVB-S2 networks based on Ayecka products. Minimal CPU requirements and short learning curve.

**Bulk operation** – AEM offers a simple way to manipulate bulk of products. An example can be configuring 2nd RX frequency to all remote terminals during changes in signals allocation. By using bulk operations the network operator saves time and increases reliability.

**Open standard** – AEM is based on standard protocols such as SNMP, PING and TFTP. Support for standard SQL database for simple backup and data management

**Fully customizable** – AEM is designed to be customized to your needs – Interface Localization (Multi-language) support, Customized product label and Logo

**Fault detection** – Fast and easy fault detection. Significantly lowers mean time to repair (MTTR) and increase service up time

**Reports and statistics** – AEM collects, archives and presents to you all the information you need to optimize the use your SCPC network

**Hierarchical organization** – The AEM arranges the component on their natural structure, HUB, STAR, Remote, for simple operation. The Hierarchical structure simplifies bulk operations and improves to visibility into the network

**Intuitive user interface** – with many years of hands on experience in IP over satellite, Ayecka created an easy to use and intuitive management tool. AEM is easy to install and operate. Running a network using the AEM is more stable and requires less effort than other alternatives.

**Simple creation and manipulation of groups** – Many operations and monitoring tasks are based on the grouping of elements in the network to single logical entity. The AEM offers simple and intuitive tools to group different device into a single manageable entity.

**Supports one way control without return channel** – Using advanced forward error detection and correction, the AEM is capable of managing remote device without ANY return channel.

## Applications

**SCPC** – Manage large SCPC networks, HUB and remote sites.

**Terrestrial return channels** – Manage one-way IP over satellite networks with any IP return channel.

**One way networks** – Datacasting ,IPTV and other application without return channel.

Version management – simple, easy and reliable image updates to all Ayecka products on your network.

# AEM

## Functionality

### Scalability

Max number of device 10000

### Redundancy

Active redundancy Redundant server is constantly updates and automatically take over if main server fail

### Graphic display

Tree Optimized for high level view of the network  
 Map Optimized for detailed look of the network  
 Device Optimized for device level , including front panel indication and detailed parameters

### Version management

Group update Simple software and firmware upgrade of selected group of device

Single device update To support Testing of new versions

Delayed update Upload images during active time. Activate new images during maintenance window

version report to All Allow the detection of a device with incorrect version across the network

group Allow the detection of a device with incorrect version for defined group

### One way control

Implementation based on advanced FEC and carousel mode of broadcasted content

SW / FW images For versions upgrade

Command SNMP set commands

Reliability Over 99.999%

### Managed and Monitored parameters

Rx parameters Including Es/No, Rx Power, Frequency offset, symbol rate, MODCOD and more

Tx parameters ( from reference receiver) Power, Frequency, symbol rate, MODCOD

Keep alive Ping and Up time  
 Throughput Usng SNMP

### Bulk operation

Implementation Creating template using graphic interface and assigning it to a group.

SNMP based commands Script files support use of SNMP commands

Detailed report per operation List of configured device with acknowledge time

Scheduled operations Operations can be scheduled by operator

### Localization

Icons Modify the icon of each device / state

Logo Using the operator logo  
 Language Support for any language and Fonts

Language Translation of a file from English to any language

### Messages window

Trap listener collects SNMP traps from all devices in the network  
 Syslog Listener collects syslog messages from all devices In the network

Color coding Based on the source of the message

Filtering Based on source, time, selected text

### Database

Local text based For very light weight installations  
 SQL For standard database management